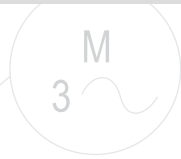
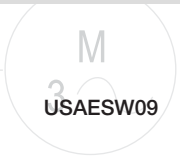
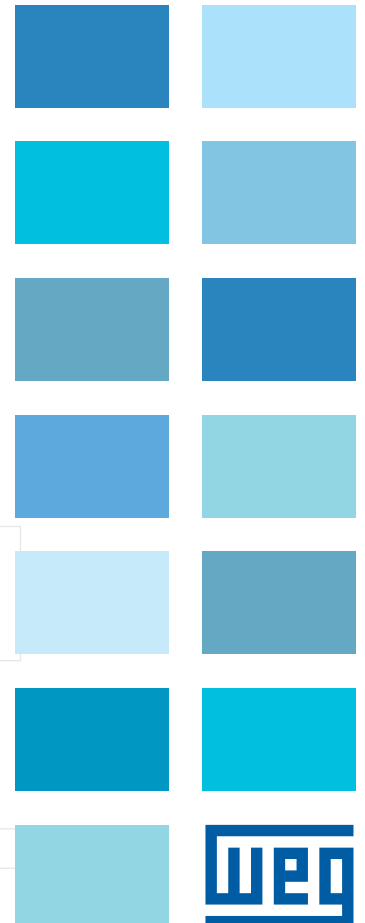
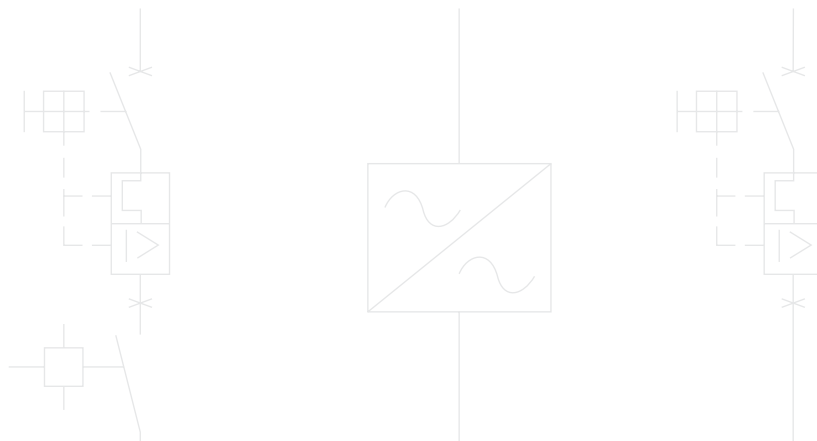


Enclosed Starters

Operation and Protection of Motors up to 75Hp at 460Vac (100A)

- Compact starter
- Price competitive
- High KAIC ratings
- Products in stock

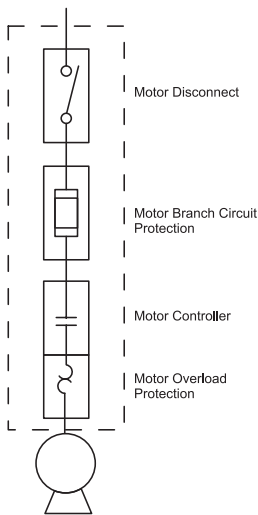


Combination Starter Basics

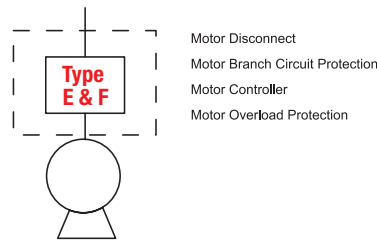
Combination starters are the most common type of packaged motor controllers. They are called combination because of their construction and combined functions required by the US National Electric Code (NEC): Motor Disconnect, Motor Branch Circuit Protection, Motor Controller and Motor Overload Protection. UL & CSA currently recognizes six different constructions of combination starters that meet the requirements of a motor branch circuit.

Constructions Types A through D are traditional starters that use either a listed disconnect switch and fuses or a listed circuit breakers as the disconnect means and for short circuit protection. Each type uses a separate UL508 listed motor controller and overload relay. **Recently revisions on UL508 introduced the Type E and Type F starters.**

UL Combination Starter Type	Device Used for Component Function			
	Disconnected	Branch Circuit Protection	Motor Controller	Motor OL Relay
A	UL 98 Manual Disconnect	UL 248 Fuses	UL 508 Magnetic or Solid State Controller	UL 508 Motor Overload Relay
B		UL 508 Motor Short Circuit Protector		
C	UL 489 Inverse Time Circuit Breaker			
D	UL 489 Instantaneous Trip Circuit Breaker			
E	UL 508 Self-Protected Combination Controller			
F	UL 508 Manual Self-Protected Combination Controller	UL 508 Magnetic or Solid State Controller	UL 508 Manual Self-Protected Combination Controller	



Types A through D combination starters



Type E and F combination starters

Types E & F starters combine in a compact set all the required functions of a combination starter and eliminate any additional requirements for upstream fuses or circuit breakers. Type E starters (ESWE series) range from fractional up to 20Hp@460V while type F starters (ESWF series) go up to 75Hp@460V.



ESWE Series - Combination Type-E Across The Line Starter

- Branch Disconnect: Rotary through-the-door Handle
- Short-Circuit Protection: Manual Motor Protection
- Motor Control: Magnetic Contactor
- Overload Protection: Manual Motor Protection
- Control Devices: Hand-Off-Auto switch, Start-Stop pushbutton, pilot lights

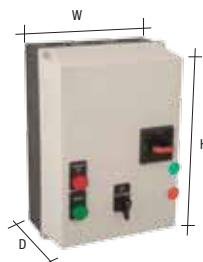
Three-Phase without CPT - Enclosure Type-4X

Max. 3-ph HP Motor		Box Size	Setting Range	Coil Voltage	Non-Metallic Enclosure Type 4X		Multiplier Symbol
230V	460V				Catalog Number	List Price	
-	1/2	R	0.63 - 1.0	120	ESWE-9V18KX-D05	\$715	Z3
				480	ESWE-9V47KX-D05		
1/3	3/4	R	1.0 - 1.6	120	ESWE-9V18KX-D06	\$715	Z3
				208-240	ESWE-9V24KX-D06		
				480	ESWE-9V47KX-D06		
1/2	1-1/2	R	1.6 - 2.5	120	ESWE-9V18KX-D07	\$715	Z3
				208-240	ESWE-9V24KX-D07		
				480	ESWE-9V47KX-D07		
1	2	R	2.5 - 4.0	120	ESWE-9V18KX-D08	\$715	Z3
				208-240	ESWE-9V24KX-D08		
				480	ESWE-9V47KX-D08		
1-1/2	3	R	4.0 - 6.3	120	ESWE-9V18KX-D09	\$715	Z3
				208-240	ESWE-9V24KX-D09		
				480	ESWE-9V47KX-D09		
3	5	R	6.3 - 10	120	ESWE-9V18KX-D10	\$715	Z3
				208-240	ESWE-9V24KX-D10		
				480	ESWE-9V47KX-D10		
5	10	R	10 - 16	120	ESWE-18V18KX-D11	\$759	Z3
				208-240	ESWE-18V24KX-D11		
				480	ESWE-18V47KX-D11		
7-1/2	15	R	16 - 20	120	ESWE-25V18KX-D12	\$774	Z3
				208-240	ESWE-25V24KX-D12		
				480	ESWE-25V47KX-D12		
10	20	R	25 - 32	120	ESWE-40V18KX-D14	\$860	Z3
				208-240	ESWE-40V24KX-D14		
				480	ESWE-40V47KX-D14		

Three-Phase with CPT - Enclosure Type-4X

Max. 3-ph HP Motor		Box Size	Setting Range	Pri./Sec. Voltage	Non-Metallic Enclosure Type 4X		Multiplier Symbol
230V	460V				Catalog Number	List Price	
-	1/2	R	0.63 - 1.0	480/120	ESWE-9T04KX-D05	\$915	Z3
				240/120	ESWE-9T02KX-D06		
1/3	3/4	R	1.0 - 1.6	480/120	ESWE-9T04KX-D06	\$915	Z3
				240/120	ESWE-9T02KX-D07		
1/2	1-1/2	R	1.6 - 2.5	480/120	ESWE-9T04KX-D07	\$915	Z3
				240/120	ESWE-9T02KX-D08		
1	2	R	2.5 - 4.0	480/120	ESWE-9T04KX-D08	\$915	Z3
				240/120	ESWE-9T02KX-D09		
1-1/2	3	R	4.0 - 6.3	480/120	ESWE-9T04KX-D09	\$915	Z3
				240/120	ESWE-9T02KX-D10		
3	5	R	6.3 - 10	480/120	ESWE-9T04KX-D10	\$915	Z3
				240/120	ESWE-18T02KX-D11		
5	10	R	10 - 16	480/120	ESWE-18T04KX-D11	\$959	Z3
				240/120	ESWE-25T02KX-D12		
7-1/2	15	R	16 - 20	480/120	ESWE-25T04KX-D12	\$974	Z3
				240/120	ESWE-40T02KX-D14		
10	20	R	25 - 32	480/120	ESWE-40T04KX-D14	\$1,060	Z3

Dimensions



Dimensions (in)		
H	W	D
14	10	6.6



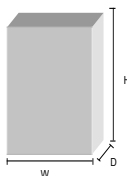
ESWF Series - Combination Type-F Across The Line Starter

THREE-PHASE without Control Power Transformer

- Branch Disconnect: Rotary through-the-door Handle
- Short-Circuit Protection: Manual Motor Protection
- Motor Control: Magnetic Contactor
- Overload Protection: Manual Motor Protection
- Control Devices: Hand-Off-Auto switch, Start-Stop pushbutton

Max. 3-ph HP Motor			Overload Setting Range	Coil Voltage	Metallic Enclosure Type 3R			Metallic Enclosure Type 4/12			Non-Metallic Enclosure Type 4X			Multiplier Symbol
230V	460V	575V			Catalog Number	List Price	Box Size	Catalog Number	List Price	Box Size	Catalog Number	List Price	Box Size	
-	1/2	1/2	0.63-1.0	120	ESWF-9V18N3-D05	\$1,030	A	ESWF-9V18N4-D05	\$1,225	A	ESWF-9V18NX-D05	\$1,085	A	Z3
				480	ESWF-9V47N3-D05			ESWF-9V47N4-D05			ESWF-9V47NX-D05			
1/3	3/4	1	1.0-1.6	120	ESWF-9V18N3-D06	\$1,030	A	ESWF-9V18N4-D06	\$1,225	A	ESWF-9V18NX-D06	\$1,085	A	Z3
				208-240	ESWF-9V24N3-D06			ESWF-9V24N4-D06			ESWF-9V24NX-D06			
				480	ESWF-9V47N3-D06			ESWF-9V47N4-D06			ESWF-9V47NX-D06			
1/2	1-1/2	1-1/2	1.6-2.5	120	ESWF-9V18N3-D07	\$1,030	A	ESWF-9V18N4-D07	\$1,225	A	ESWF-9V18NX-D07	\$1,085	A	Z3
				208-240	ESWF-9V24N3-D07			ESWF-9V24N4-D07			ESWF-9V24NX-D07			
				480	ESWF-9V47N3-D07			ESWF-9V47N4-D07			ESWF-9V47NX-D07			
1	2	3	2.5-4.0	120	ESWF-9V18N3-D08	\$1,030	A	ESWF-9V18N4-D08	\$1,225	A	ESWF-9V18NX-D08	\$1,085	A	Z3
				208-240	ESWF-9V24N3-D08			ESWF-9V24N4-D08			ESWF-9V24NX-D08			
				480	ESWF-9V47N3-D08			ESWF-9V47N4-D08			ESWF-9V47NX-D08			
1-1/2	3	5	4.0-6.3	120	ESWF-9V18N3-D09	\$1,030	A	ESWF-9V18N4-D09	\$1,225	A	ESWF-9V18NX-D09	\$1,085	A	Z3
				208-240	ESWF-9V24N3-D09			ESWF-9V24N4-D09			ESWF-9V24NX-D09			
				480	ESWF-9V47N3-D09			ESWF-9V47N4-D09			ESWF-9V47NX-D09			
3	5	7 1/2	6.3-10	120	ESWF-9V18N3-D10	\$1,030	A	ESWF-9V18N4-D10	\$1,225	A	ESWF-9V18NX-D10	\$1,085	A	Z3
				208-240	ESWF-9V24N3-D10			ESWF-9V24N4-D10			ESWF-9V24NX-D10			
				480	ESWF-9V47N3-D10			ESWF-9V47N4-D10			ESWF-9V47NX-D10			
5	10	15	10-16	120	ESWF-18V18N3-D11	\$1,080	A	ESWF-18V18N4-D11	\$1,300	A	ESWF-18V18NX-D11	\$1,145	A	Z3
				208-240	ESWF-18V24N3-D11			ESWF-18V24N4-D11			ESWF-18V24NX-D11			
				480	ESWF-18V47N3-D11			ESWF-18V47N4-D11			ESWF-18V47NX-D11			
7-1/2	15	15	16-20	120	ESWF-25V18N3-D12	\$1,165	B	ESWF-25V18N4-D12	\$1,390	B	ESWF-25V18NX-D12	\$1,280	B	Z3
				208-240	ESWF-25V24N3-D12			ESWF-25V24N4-D12			ESWF-25V24NX-D12			
				480	ESWF-25V47N3-D12			ESWF-25V47N4-D12			ESWF-25V47NX-D12			
10	20	25	25-32	120	ESWF-40V18N3-D14	\$1,250	B	ESWF-40V18N4-D14	\$1,470	B	ESWF-40V18NX-D14	\$1,320	B	Z3
				208-240	ESWF-40V24N3-D14			ESWF-40V24N4-D14			ESWF-40V24NX-D14			
				480	ESWF-40V47N3-D14			ESWF-40V47N4-D14			ESWF-40V47NX-D14			
15	25	30	32-40	120	ESWF-50V18N3-D19	\$1,550	C	ESWF-50V18N4-D19	\$1,840	C	ESWF-50V18NX-D19	\$1,730	C	Z3
				208-240	ESWF-50V24N3-D19			ESWF-50V24N4-D19			ESWF-50V24NX-D19			
				480	ESWF-50V47N3-D19			ESWF-50V47N4-D19			ESWF-50V47NX-D19			
15	30	40	40-50	120	ESWF-65V18N3-D20	\$1,670	C	ESWF-65V18N4-D20	\$1,920	C	ESWF-65V18NX-D20	\$1,840	C	Z3
				208-240	ESWF-65V24N3-D20			ESWF-65V24N4-D20			ESWF-65V24NX-D20			
				480	ESWF-65V47N3-D20			ESWF-65V47N4-D20			ESWF-65V47NX-D20			
20	40	60	50-65	120	ESWF-80V18N3-D21	\$1,800	D	ESWF-80V18N4-D21	\$2,010	D	ESWF-80V18NX-D21	\$3,785	D	Z3
				208-240	ESWF-80V24N3-D21			ESWF-80V24N4-D21			ESWF-80V24NX-D21			
				480	ESWF-80V47N3-D21			ESWF-80V47N4-D21			ESWF-80V47NX-D21			
25	50	60	55-75	120	ESWF-95V18N3-D22	\$1,980	D	ESWF-95V18N4-D22	\$2,150	D	ESWF-95V18NX-D22	\$3,920	D	Z3
				208-240	ESWF-95V24N3-D22			ESWF-95V24N4-D22			ESWF-95V24NX-D22			
				480	ESWF-95V47N3-D22			ESWF-95V47N4-D22			ESWF-95V47NX-D22			
30	60	75	70-90	120	ESWF-95V18N3-D23	\$2,110	D	ESWF-95V18N4-D23	\$2,265	D	ESWF-95V18NX-D23	\$4,100	D	Z3
				208-240	ESWF-95V24N3-D23			ESWF-95V24N4-D23			ESWF-95V24NX-D23			
				480	ESWF-95V47N3-D23			ESWF-95V47N4-D23			ESWF-95V47NX-D23			
30	75	100	80-100	120	ESWF-105V18N3-D24	\$2,250	D	ESWF-105V18N4-D24	\$2,435	D	ESWF-105V18NX-D24	\$4,230	D	Z3
				208-240	ESWF-105V24N3-D24			ESWF-105V24N4-D24			ESWF-105V24NX-D24			
				480	ESWF-105V47N3-D24			ESWF-105V47N4-D24			ESWF-105V47NX-D24			

Dimensions (inches)			
Box Size	Enclosure Size		
	H	W	D
A	12	12	8
B	14	12	8
C	16	12	8
D	20	16	8



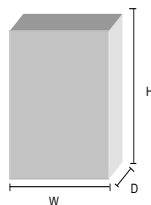
ESWF Series - Combination Type-F Across The Line Starter

THREE-PHASE with Control Power Transformer

- Branch Disconnect: Rotary through-the-door Handle
- Short-Circuit Protection: Manual Motor Protection
- Motor Control: Magnetic Contactor
- Overload Protection: Manual Motor Protection
- Control Devices: Hand-Off-Auto switch, Start-Stop pushbutton, control transformer

Max. 3-ph HP Motor			Overload Setting Range	Coil Voltage	Metallic Enclosure Type 3R			Metallic Enclosure Type 4/12			Non-Metallic Enclosure Type 4X			Multiplier Symbol
230V	460V	575V			Catalog Number	List Price	Box Size	Catalog Number	List Price	Box Size	Catalog Number	List Price	Box Size	
-	1/2	1/2	0.63-1.0	480/120	ESWF-9T04N3-D05	\$1,130	A	ESWF-9T04N4-D05	\$1,325	A	ESWF-9T04NX-D05	\$1,185	A	Z3
1/3	3/4	1	1.0-1.6	240/120	ESWF-9T02N3-D06	\$1,130	A	ESWF-9T02N4-D06	\$1,325	A	ESWF-9T02NX-D06	\$1,185	A	Z3
				480/120	ESWF-9T04N3-D06			ESWF-9T04N4-D06			ESWF-9T04NX-D06			
1/2	1-1/2	1-1/2	1.6-2.5	240/120	ESWF-9T02N3-D07	\$1,130	A	ESWF-9T02N4-D07	\$1,325	A	ESWF-9T02NX-D07	\$1,185	A	Z3
				480/120	ESWF-9T04N3-D07			ESWF-9T04N4-D07			ESWF-9T04NX-D07			
1	2	3	2.5-4.0	240/120	ESWF-9T02N3-D08	\$1,130	A	ESWF-9T02N4-D08	\$1,325	A	ESWF-9T02NX-D08	\$1,185	A	Z3
				480/120	ESWF-9T04N3-D08			ESWF-9T04N4-D08			ESWF-9T04NX-D08			
1-1/2	3	5	4.0-6.3	240/120	ESWF-9T02N3-D09	\$1,130	A	ESWF-9T02N4-D09	\$1,325	A	ESWF-9T02NX-D09	\$1,185	A	Z3
				480/120	ESWF-9T04N3-D09			ESWF-9T04N4-D09			ESWF-9T04NX-D09			
3	5	7 1/2	6.3-10	240/120	ESWF-9T02N3-D10	\$1,130	A	ESWF-9T02N4-D10	\$1,325	A	ESWF-9T02NX-D10	\$1,185	A	Z3
				480/120	ESWF-9T04N3-D10			ESWF-9T04N4-D10			ESWF-9T04NX-D10			
5	10	15	10-16	240/120	ESWF-18T02N3-D11	\$1,180	A	ESWF-18T02N4-D11	\$1,400	A	ESWF-18T02NX-D11	\$1,245	A	Z3
				480/120	ESWF-18T04N3-D11			ESWF-18T04N4-D11			ESWF-18T04NX-D11			
7-1/2	15	15	16-20	240/120	ESWF-25T02N3-D12	\$1,265	B	ESWF-25T02N4-D12	\$1,490	B	ESWF-25T02NX-D12	\$1,380	B	Z3
				480/120	ESWF-25T04N3-D12			ESWF-25T04N4-D12			ESWF-25T04NX-D12			
10	20	25	25-32	240/120	ESWF-40T02N3-D14	\$1,400	B	ESWF-40T02N4-D14	\$1,620	B	ESWF-40T02NX-D14	\$1,470	B	Z3
				480/120	ESWF-40T04N3-D14			ESWF-40T04N4-D14			ESWF-40T04NX-D14			
15	25	30	32-40	240/120	ESWF-50T02N3-D19	\$1,700	C	ESWF-50T02N4-D19	\$1,990	C	ESWF-50T02NX-D19	\$1,880	C	Z3
				480/120	ESWF-50T04N3-D19			ESWF-50T04N4-D19			ESWF-50T04NX-D19			
15	30	40	40-50	240/120	ESWF-65T02N3-D20	\$1,870	C	ESWF-65T02N4-D20	\$2,120	C	ESWF-65T02NX-D20	\$2,040	C	Z3
				480/120	ESWF-65T04N3-D20			ESWF-65T04N4-D20			ESWF-65T04NX-D20			
20	40	60	50-65	240/120	ESWF-80T02N3-D21	\$2,000	D	ESWF-80T02N4-D21	\$2,210	D	ESWF-80T02NX-D21	\$3,985	D	Z3
				480/120	ESWF-80T04N3-D21			ESWF-80T04N4-D21			ESWF-80T04NX-D21			
25	50	60	55-75	240/120	ESWF-95T02N3-D22	\$2,180	D	ESWF-95T02N4-D22	\$2,350	D	ESWF-95T02NX-D22	\$4,120	D	Z3
				480/120	ESWF-95T04N3-D22			ESWF-95T04N4-D22			ESWF-95T04NX-D22			
30	60	75	70-90	240/120	ESWF-95T02N3-D23	\$2,310	D	ESWF-95T02N4-D23	\$2,465	D	ESWF-95T02NX-D23	\$4,300	D	Z3
				480/120	ESWF-95T04N3-D23			ESWF-95T04N4-D23			ESWF-95T04NX-D23			
30	75	100	80-100	240/120	ESWF-105T02N3-D24	\$2,450	D	ESWF-105T02N4-D24	\$2,635	D	ESWF-105T02NX-D24	\$4,430	D	Z3
				480/120	ESWF-105T04N3-D24			ESWF-105T04N4-D24			ESWF-105T04NX-D24			

Dimensions (inches)			
Box Size	Enclosure Size		
	H	W	D
A	12	12	8
B	14	12	8
C	16	12	8
D	20	16	8





Custom Control Devices (factory assembly)

Standard Enclosed Starters will be supplied with correspondent control devices as listed on selection table. For custom control devices as shown below, please change control devices part number code for letter "Z" and add the correspondent code to the end of Enclosed Starter part number.

Example:

Standard 100Hp@460Vac Fusible Disconnect Starter with Start/Stop pushbutton and hand-off-auto selector switch. Metallic Type 3R box without control transformer.
Catalog Number: **ESWA-150V47N3-R48**

For custom control devices, the letter "N" of the code above that represents the control devices part number code should be changed for "Z" (ESWA-150V47Z3-R48) and the code for the selected control devices should be added at the end of catalog number.

For the enclosed starter mentioned above, a custom control devices having the components listed below would have the following Catalog Number: **ESWA-150V47Z3-R48Z2B12I12V12X1CC2PC1**

- . 1 unit of a 22mm momentary non-illuminated extended pushbutton (code: **2B1**)
- . 1 unit of a 22mm maintained non-illuminated twist to release pushbutton (code: **2H1**)
- . 1 unit of a 22mm auxiliary contact block NO (code: **2V1**)
- . 1 unit of a 22mm auxiliary contact block NC (code: **2X1**)
- . 2 units of a contactor's auxiliary contact block (code: **CC2**)
- . 1 unit of a under and overvoltage protection relay (code: **PC1**)

Control Devices Description	Catalog Number	List Price	Mult. Symbol	Valid for Series	Catalog Number (to be added at the end of enclosed starter catalog number)													
					Customization	Pushbuttons (22mm)	Qty	Pushbuttons (30mm)	Qty	Contactor Accessories	Qty	MPW Accessories	Qty	Timing Relays	Qty	Protection Relays	Qty	Level Relays
Pushbuttons and Pilot Lights (22mm Series)																		
Momentary Non-Illuminated - Flush •	CSW-BF	\$6.80	Z3	ESWA ESWC ESWF ESWA (P)	Z	2A	---											
Momentary Non-Illuminated - Extended •	CSW-BS	\$9.00	Z3		Z	2B	---											
Momentary Non-Illuminated - Recessed •	CSW-BGA	\$7.00	Z3		Z	2C	---											
Momentary Non-Illuminated - Mushroom •	CSW-BC	\$11.00	Z3		Z	2D	---											
Momentary Non-Illuminated - Double	CSW-BD	\$15.30	Z3		Z	2E	---											
Momentary Illuminated - Flush ••	CSW-BF	\$11.20	Z3		Z	2F	---											
Momentary Illuminated - Extended ••	CSW-BS	\$11.00	Z3		Z	2G	---											
Momentary Illuminated - Mushroom ••	CSW-BC	\$10.00	Z3		Z	2H	---											
Maintained Non-Illuminated - Twist to release •	CSW-BEG	\$16.10	Z3		Z	2I	---											
Maintained Non-Illuminated - Key to release •	CSW-BEY	\$48.00	Z3		Z	2J	---											
Selector Switch Non-Illuminated - Knob (maintained) •••	CSW-CK F	\$15.00	Z3		Z	2K	---											
Selector Switch Non-Illuminated - Knob (spring return) •••	CSW-CK R	\$17.00	Z3		Z	2L	---											
Selector Switch Non-Illuminated - Lever (maintained) •••	CSW-CA F	\$16.00	Z3		Z	2M	---											
Selector Switch Non-Illuminated - Lever (spring return) •••	CSW-CA R	\$18.00	Z3		Z	2N	---											
Selector Switch Non-Illuminated - Key (maintained) •••	CSW-CY F	\$46.00	Z3		Z	2O	---											
Selector Switch Non-Illuminated - Key (spring return) •••	CSW-CY R	\$49.00	Z3		Z	2P	---											
Selector Switch Illuminated - Knob (maintained) •••	CSW-CKI F	\$11.50	Z3		Z	2Q	---											
Selector Switch Illuminated - Knob (spring return) •••	CSW-CKI R	\$13.00	Z3		Z	2R	---											
Pilot Light •	CSW-SD	\$9.40	Z3		Z	2S	---											
LED Block (up to 240Vac) ••	CSW-BIDL	\$16.00	Z3		Z	2T	---											
LED Block (460Vac) •	CSW-BIDL_D66 + CSW-BRT-D85	\$25.80	Z3	Z	2U	---												
Auxiliary Contact Block - 1NO	BC10-CSW	\$5.00	Z3	Z	2V	---												
Auxiliary Contact Block - 1NC	BC01-CSW	\$5.00	Z3	Z	2X	---												
Legend Plate (package with 5 units)	refer to page 298	\$21.00	Z3	Z	2Y	---												
Pushbuttons and Pilot Lights (30mm Series)																		
Momentary Non-Illuminated - Flush •	CSW30-BF	\$26.00	Z3	ESWA ESWC ESWF ESWA (P)	Z												3A	
Momentary Non-Illuminated - Extended •	CSW30-BS	\$26.00	Z3		Z													3B
Momentary Non-Illuminated - Recessed •	CSW30-BGA	\$32.00	Z3		Z													3C
Momentary Non-Illuminated - Mushroom •	CSW30-BC	\$37.00	Z3		Z													3D
Momentary Illuminated - Extended (LED block included) ••	CSW30-BS	\$93.00	Z3		Z													3G
Momentary Illuminated - Recessed (LED block included) ••	CSW30-BGA	\$100.00	Z3		Z													3W
Momentary Illuminated - Mushroom (LED block included) ••	CSW30-BC	\$100.00	Z3		Z													3H
Maintained Non-Illuminated - Twist to release •	CSW30-BEG	\$81.00	Z3		Z													3I
Maintained Non-Illuminated - Pull to release •	CSW30-BEP	\$75.00	Z3		Z													3Z
Selector Switch Non-Illuminated - Knob (maintained) •••	CSW30-CK F	\$39.00	Z3		Z													3K
Selector Switch Non-Illuminated - Knob (spring return) •••	CSW30-CK R	\$57.00	Z3		Z													3L
Selector Switch Non-Illuminated - Lever (maintained) •••	CSW30-CA F	\$39.00	Z3		Z													3M
Selector Switch Non-Illuminated - Lever (spring return) •••	CSW30-CA R	\$57.00	Z3		Z													3N
Selector Switch Non-Illuminated - Key (maintained) •••	CSW30-CY F	\$110.00	Z3		Z													3O
Selector Switch Non-Illuminated - Key (spring return) •••	CSW30-CY R	\$128.00	Z3		Z													3P
Pilot Light (LED block included) ••	CSW30-SD	\$89.00	Z3		Z													3S
Auxiliary Contact Block - 1NO	BC10-CSW30	\$13.00	Z3		Z													3V
Auxiliary Contact Block - 1NC	BC01-CSW30	\$13.00	Z3		Z													3X
Legend Plate	refer to page 306	\$6.00	Z3		Z													3Y

- Specify color for a proper selection
- Specify color for a proper selection. Voltage will be the same as contactor's coil voltage
- Specify number of positions and handle position for a proper selection. For illuminated, voltage will be the same as contactor's coil voltage.

Custom Control Devices (factory assembly)

Control Devices				Catalog Number (to be added at the end of enclosed starter catalog number)																									
Description	Catalog Number	List Price	Mult. Symbol	Valid for Series	Customization	Pushbuttons (22mm)	Qty	Pushbuttons (30mm)	Qty	Contact Accessories	Qty	MPW Accessories	Qty	Timing Relays	Qty	Protection Relays	Qty	Level Relays	Qty	Control Transformer	Qty								
					Contactor Accessories³																								
Auxiliary Contact Block Front Mounting - 1NO	BCXMF10	\$10.00	Z3	ESWA ESWC ESWF ESWA (P)	Z					CA	___																		
Auxiliary Contact Block Front Mounting - 1NC	BCXMF01	\$10.00	Z3		Z					CB	___																		
Auxiliary Contact Block Side Mounting - 1NO & 1NC	BCXMS11	\$22.00	Z3		Z					CC	___																		
Surge Suppressor - RC type	BAMRC_	\$20.00	Z3		Z					CD	___																		
Manual Motor Protector Accessories⁴																													
Auxiliary Contact Block Front Mounting - 1NO & 1NC	ACBF-11	\$20.00	Z3	ESWE ESWF	Z							MA	___																
Auxiliary Contact Block Side Mounting - 2NO	ACBS-20	\$22.00	Z3		Z							MB	___																
Auxiliary Contact Block Side Mounting - 2NC	ACBS-02	\$22.00	Z3		Z							MC	___																
Undervoltage Release	URMP_	\$56.00	Z3		Z							MD	___																
Shunt Release	SRMP_	\$56.00	Z3		Z							ME	___																
Timing Relays (24-240Vac/Vdc; 0.2s to 150hs)																													
On-Delay - 2 NO/NC	RTW-RE02-MBTE05	\$105.00	Z3	ESWA ESWC ESWF ESWA (P)	Z										TA	___													
Off-Delay - 2 NO/NC	RTW-RD02-MBTE05	\$110.00	Z3		Z										TB	___													
Impulse ON - 2 NO/NC	RTW-PE02-MBTE05	\$110.00	Z3		Z										TC	___													
Symm Flasher - Pulse - 2 NO/NC	RTW-CIL02-MBTE05	\$110.00	Z3		Z										TD	___													
Symm Flasher - Pause - 2 NO/NC	RTW-CID02-MBTE05	\$110.00	Z3		Z										TE	___													
Protection Relays																													
Thermistor (PTC)	RPW-PTC_	\$105.00	Z3	ESWA ESWC ESWF ESWA (P)	Z											PA	___												
Phase-loss and Phase-sequence Protection	RPW-FSF_	\$94.50	Z3		Z												PB	___											
Under and Overvoltage Protection	RPW-SS_	\$99.75	Z3		Z												PC	___											
Level Relays⁵																													
Draining Function	RNW-ESE09	\$110.00	Z3	ESWA ESWC ESWF ESWA (P)	Z															LA	___								
Filling Function	RNW-ENE09	\$110.00	Z3		Z																LB	___							
Pendulum Type Electrode	EPW	\$40.00	Z3		Z																LC	___							
Shaft Type Electrode	EHW	\$79.00	Z3		Z																LD	___							
Control Transformer⁸																													
Up to 50Hp@460Vac				ESWA ESWC ESWE ESWF ESWA (P)	Z																XA	___							
Standard Capacity (secondary 120Vac 60Hz)	-	\$200.00	Z3		Z																		XB	___					
Standard Capacity (secondary 24Vac 60Hz)	-	\$200.00	Z3		Z																			XC	___				
100W Extra Capacity (secondary 120Vac 60Hz)	-	\$380.00	Z3		Z																			XD	___				
100W Extra Capacity (secondary 24Vac 60Hz)	-	\$380.00	Z3		Z																				XE	___			
200W Extra Capacity (secondary 120Vac 60Hz)	-	\$520.00	Z3		Z																				XF	___			
200W Extra Capacity (secondary 24Vac 60Hz)	-	\$520.00	Z3		Z																				XF	___			
300W Extra Capacity (secondary 120Vac 60Hz)	-	\$640.00	Z3		Z																					XG	___		
300W Extra Capacity (secondary 24Vac 60Hz)	-	\$640.00	Z3		Z																					XH	___		
60 to 250Hp@460Vac					ESWA ESWC ESWE ESWF ESWA (P)	Z																	XI	___					
Standard Capacity (secondary 120Vac 60Hz)	-	\$250.00	Z3	Z																						XI	___		
Standard Capacity (secondary 24Vac 60Hz)	-	\$250.00	Z3	Z																							XJ	___	
100W Extra Capacity (secondary 120Vac 60Hz)	-	\$460.00	Z3	Z																							XK	___	
100W Extra Capacity (secondary 24Vac 60Hz)	-	\$460.00	Z3	Z																								XL	___
200W Extra Capacity (secondary 120Vac 60Hz)	-	\$650.00	Z3	Z																								XM	___
200W Extra Capacity (secondary 24Vac 60Hz)	-	\$650.00	Z3	Z																								XN	___
300W Extra Capacity (secondary 120Vac 60Hz)	-	\$800.00	Z3	Z																							XO	___	
300W Extra Capacity (secondary 24Vac 60Hz)	-	\$800.00	Z3	Z																								XP	___
Terminal Blocks																													
Screw Type	refer to pages 360	-	-																										
Spring Type	refer to pages 369	-	-																										

³ Selection will be made according to contactor version and voltage inside the starter.
⁴ Selection will be made according to MPW version and voltage inside the starter.
⁵ Selection will be made according to starter rated voltage.
⁸ Control transformer primary voltage will be according to starter rated voltage.





Quote

Today's Date:

TSS		Need Quote By	
TAM		Requested Ship Date	

1. CUSTOMER INFO:

1.1 Company Name		1.3 Customer Phone/Fax	
1.2 Contact Name		1.4 End User Name	

2. SIZING:

2.1 Motor HP & RPM	
2.2 Motor FLA (Full Load Amps)	
2.3 Service Factor	

3. POWER & WIRING:

3.1 Single-Phase		3.2 Three-Phase	
3.3 Incoming Voltage [V]		3.4 Frequency [Hz]	
3.5 Portable Generator Power? YES or NO			

4. APPLICATION & ENVIRONMENT:

4.1 Replacing standard NEMA sizes? YES or NO. Specify current NEMA size									
4.2 Full Voltage		4.3 Wye-Delta		4.4 Part Winding		4.5 Non-Reversing		4.6 Reversing	
4.7 Specify Maximum number of Starts per hour									
4.8 Unit will be installed Indoors or Outdoors? Specify Ambient Temperature									
4.9 Open TYPE		4.10 Enclosed TYPE 1		4.11 Enclosed TYPE 4		4.12 Enclosed TYPE 4X			
4.13 Other Information									

5. SHORT CIRCUIT PROTECTION AND DISCONNECT:

5.1 None		5.2 Circuit Breaker		5.3 Non-Fusible Disconnect		5.4 Fusible Disconnect	
----------	--	---------------------	--	----------------------------	--	------------------------	--

6. CONTROL CIRCUIT:

6.1 Common control (same as power to motor)? YES or NO	
6.2 Control Circuit Transformer. Specify secondary voltage	
6.3 Transformer with extra capacity (VA)? Specify	

7. COVER MOUNTED 22mm DEVICES: (if yes, enter quantities)

7.1 Start/Stop Push Buttons		7.2 H-O-A Selector Switch		7.3 Off-On Selector Switch		7.4 Motor Run Light		7.5 Other (Specify)	
-----------------------------	--	---------------------------	--	----------------------------	--	---------------------	--	---------------------	--

8. OTHER SPECIFICATIONS:

WEG Electric Corporation

1-800-ASK-4-WEG

REV 08.10

When completed, please contact your regional WEG sales specialist at 1-800-ASK-4-WEG (275-4934) for directions on submittal for quotation. Please complete as much as possible and then WEG can help you complete any further pertinent information to quote.

Please contact your authorized distributor:

--



WEG Electric Corp.
 6655 Sugarloaf Parkway
 Duluth, GA 30097
 Phone: 1-800-ASK-4WEG(275-4934)
 web: www.weg.net